

CONTACT US TODAY AT 250.382.6636



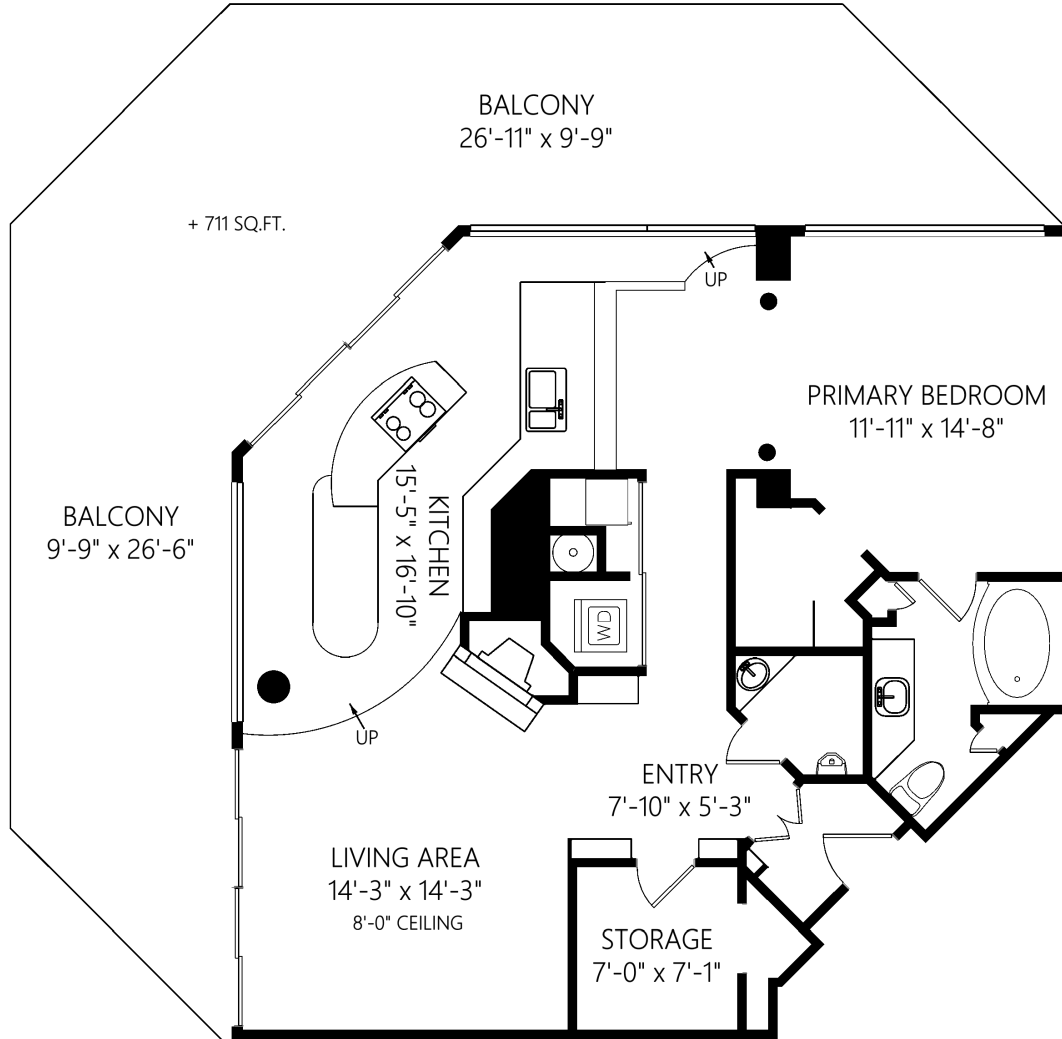
WWW.THECONDOGROUP.COM

102-3645 Tillicum Rd | Victoria | BC V8Z 4H7

THE  
CONDO  
GROUP

REAL ESTATE LTD

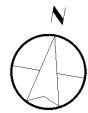
703-1234 Wharf St



**SINGLE LEVEL**

1121 FINISHED SQ.FT.

+ ADDNL. SQ.FT. WHERE NOTED



	Fin. Sq.Ft.	UnFin. Sq.Ft.	Total Sq.Ft.
<b>Single Level</b>	<b>1121</b>	<b>0</b>	<b>1121</b>
<b>Total</b>	<b>1121</b>	<b>0</b>	<b>1121</b>

Shown length and width dimensions are approximate. Area sq.ft. is representative of the on-site measurements. (1" accuracy)

**standard**  
standardres.ca

Figures, Calculations, and Representations are for indicative and promotional purpose only. VI Standard Real Estate Services Inc. will not be liable for any damages of any kind arising from the mis-use of this information.